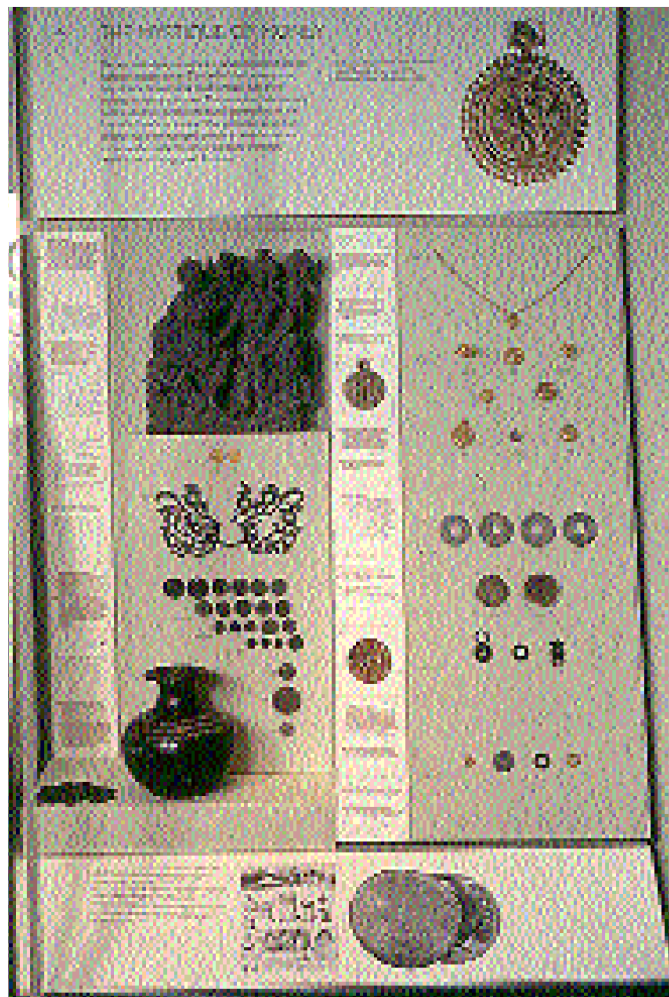




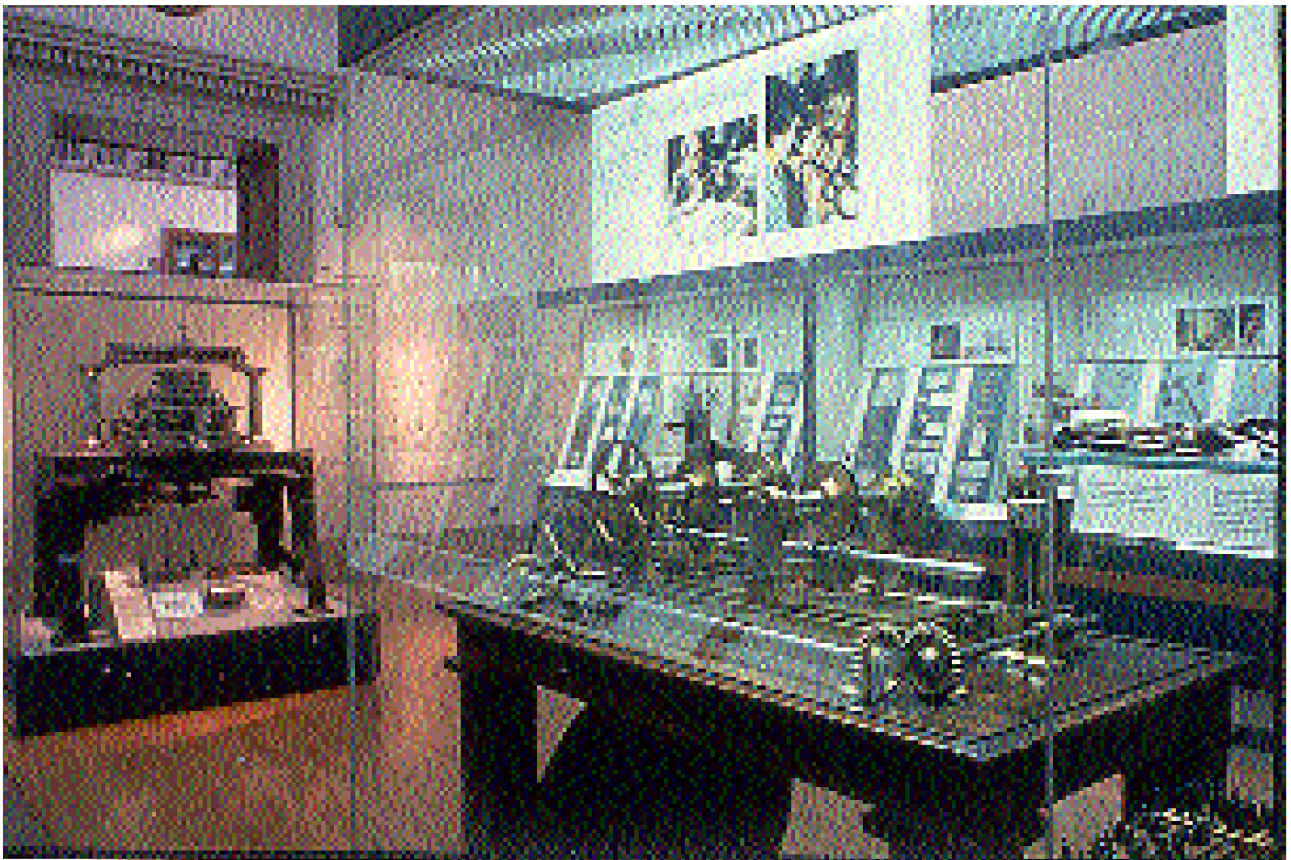
Pl. 1 The HSBC Money Gallery



Pl. 2. A typical sub-section of a wall case



Pl. 3 A whole wall case in the '1700 to the present day' section of the gallery



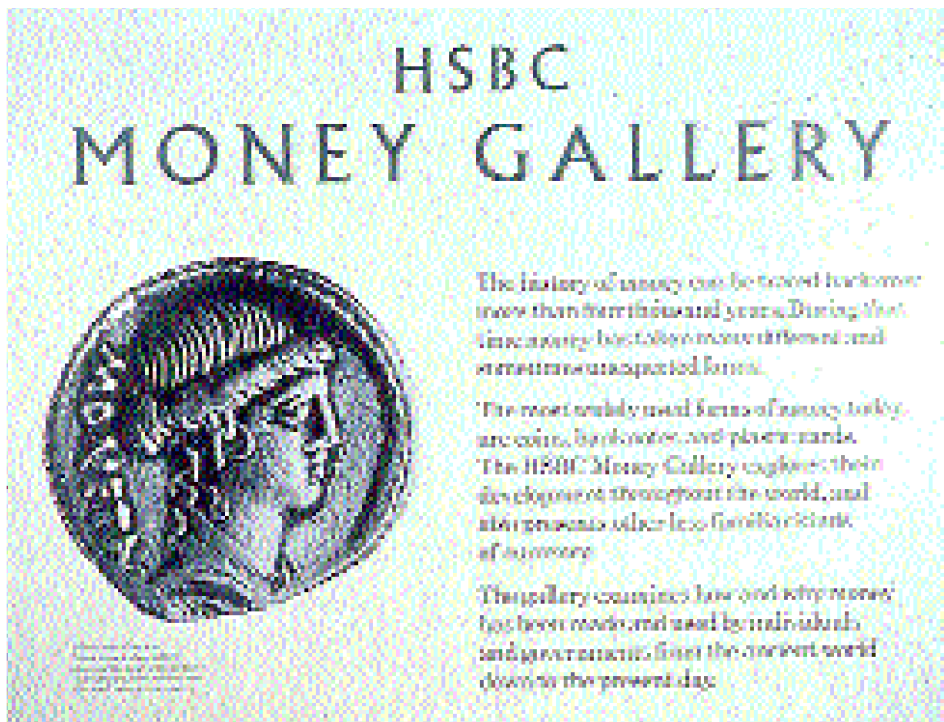
Pl. 4. Island cases containing machinery used in the manufacture of coins and banknotes



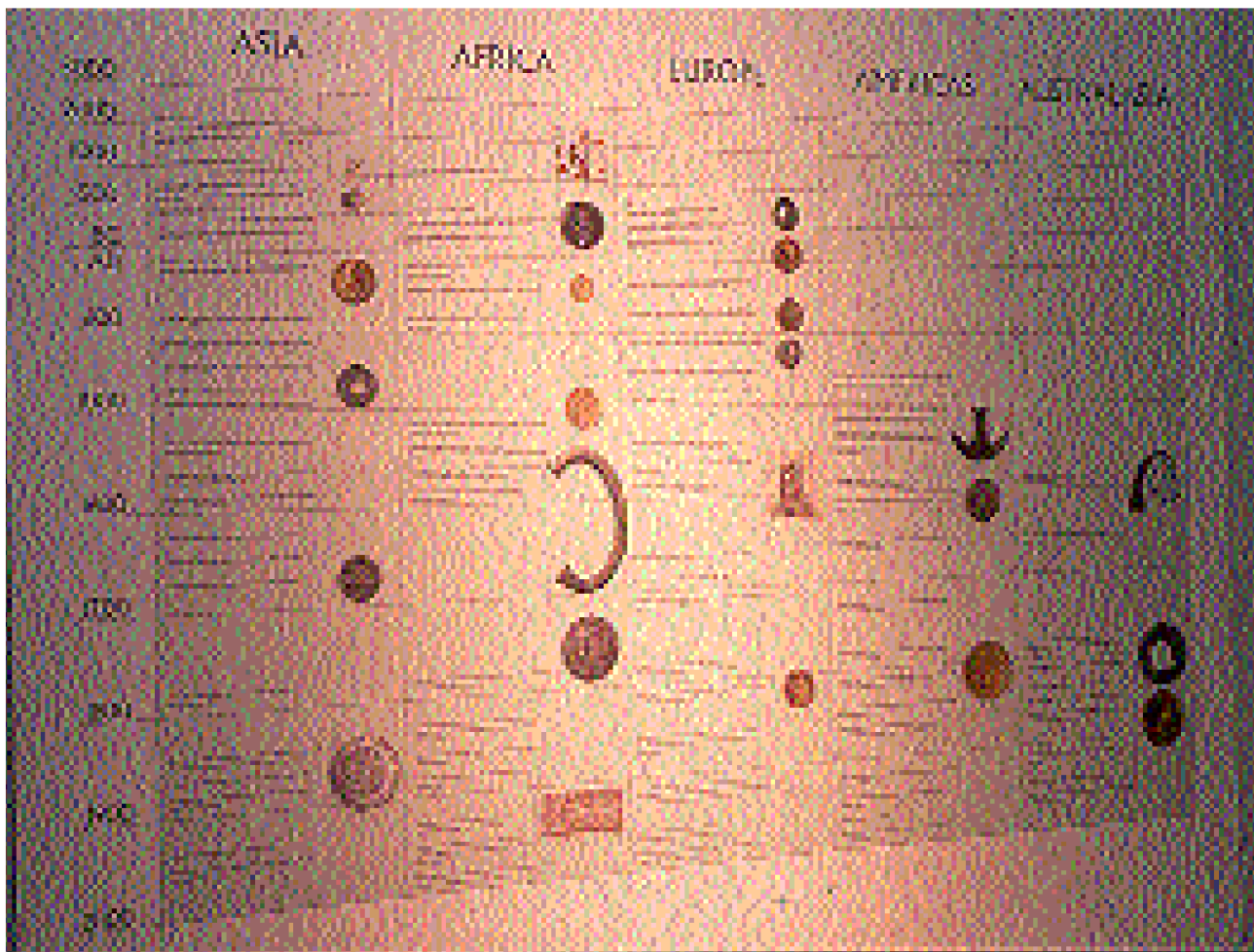
Pl. 5 Engraving tools on a shelf within an island case



Pl. 6 Central case used for the display of hoards



Pl. 7 One of the gallery's two introductory panels



Pl. 8 One of the gallery's two chronology panels