

WORLD CONSERVATION & EXHIBITIONS CENTRE

For more information, visit britishmuseum.org/wcec

2010 / 2013

Lots of progress has been made both on and off the site over the last few months. The design team has been busy finalising the last of the design packages and the excavation of the basement has started in earnest.

The project pages of the Museum's website have been updated and now include an interactive plan showing a cross section of the new Centre. This is a great way to explore the new building from top to bottom and find out more about the facilities it will provide. For more information, visit: britishmuseum.org/wcec

In this issue

- 1 Site update
- 2 Facts and figures
- 3 Montague Place
- 4 Outreach programme
- 5 Who to contact

1 Site update



The Bachy team before leaving the site in August

Piling is now complete. The final piles were bored at the beginning of August and after a period of demobilisation, Bachy has left the site.

PJ Careys, the substructure contractor, is now the main contractor occupying the site and this has allowed them to increase the number of operatives they have working, with the number now standing at approximately 50.

PJ Careys' initial activity has been the removal of the piling guide wall around the perimeter of the site, and the installation of the capping beam. The capping beam joins the secant wall piles together and allows the props to be installed for the excavation.

Props are installed to support the structure as the basement is excavated.

With the capping beam in place, the excavation of the three levels of basement has been able to commence, this will take place over a period of 26 weeks, completing in spring 2012. Approximately 37,000m³ of excavated material needs to be removed from site, which equates to 4,500 lorry loads.

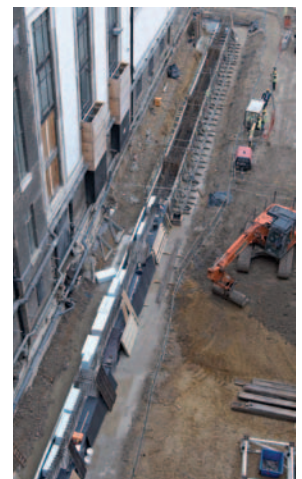
An important project milestone took place over the first weekend in October with the erection of two tower cranes. The cranes will lift materials and equipment into and out of the site, as well as within the site, until construction is complete. They are fundamental to the operation of the site.



Installation of capping beam



Pouring concrete to form capping beam



Capping beam

2 Facts and figures

Some impressive facts and figures about the project have been compiled.

Activity	Fact	That's equivalent to...
Piling	Total length of piles – 12,000m	<ul style="list-style-type: none"> • 30 laps of a 400m running track • The height of Mount Everest, with 10 Shards standing on top of it
	Volume of concrete in piles – 21,250m³	
Basement	Weight of concrete in piles – 51,000 tonnes	<ul style="list-style-type: none"> • One <i>Titanic</i> and two Wembley arches (with a bit to spare)
	Volume of concrete in basement – 7,200m³	<ul style="list-style-type: none"> • Two tennis courts, 20m in height
Superstructure	Volume of soil to be excavated – 37,000m³	<ul style="list-style-type: none"> • 15 Olympic-sized swimming pools
	Tonnage of steel – 1,500 tonnes	<ul style="list-style-type: none"> • Eight blue whales
General	Six of the objects from <i>A History of the World in 100 objects</i> are within 2–3m of site	
	Total area of the WCEC – 18,000m²	<ul style="list-style-type: none"> • 40 NBA regulation size basketball courts
	68% of the building is below ground level	

4 Outreach programme

With the Museum's education team, a programme of outreach work linked to the project is being developed. With Liam O'Connor (artist in residence) we have started to work with a school in Camden as part of their BTEC Art and Design course. This term the course has the theme of Urban Journeys which relates well to Liam's own work.

The programme involves a combination class visits to the project site to explore and record the landscape, and Liam

going to the school to work with the students in the classroom. The students are encouraged to explore some of the methods and techniques that Liam uses such as photograms, rubbings, etchings, photography and digital techniques.

With Mace, further outreach programmes are being planned, these will include working with local schools and colleges to promote an awareness of the construction industry and the skills and careers that can be developed.



Going into site with the students



Students drawing in the site

3 Montague Place

The project site accommodation is now occupied and operational, spanning the roadway at high level at the junction of Montague Place and Malet Street. All pedestrian access into and out of the site, for site operatives, management and visitors, is via a single entrance on Montague Place.

Once the excavation is underway and the site drops to a level that prevents the use of the vehicle ramp, a gantry will be erected inside the entrance to the site, from which vehicles will be loaded and unloaded. The loading and unloading of lorries will be strictly marshalled and will be undertaken primarily by the tower cranes.

The hoarding around the vehicle entrance to site on Montague Place will be revised with two pairs of gates installed. Vehicles will come in one gate and exit via the other, preventing the need to for vehicles to reverse in or out of the site.

A carefully planned logistics programme has been prepared to manage the increase in vehicle movements during the excavation phase of work. Priority is being given to ensure pedestrian routes and crossings are clearly defined as construction traffic in this area will increase in coming months.

5 Who to contact

If you have any questions or would like more information about the project please contact Heidi Weeks on 020 7323 8713 or email wcec@britishmuseum.org

If you have any questions regarding the activity on site, you can also contact Martin Field at Mace on 020 8256 951.